



StainProtect PROFI

Pavement Protection



weoss StainProtect PROFI Pavement Protection

Uses:

Protection of Natural Stone and Concrete Pavements and Floors against staining by grease, oil, fats, fast food, tyre rubber, footwear marks and normal pavement grime.

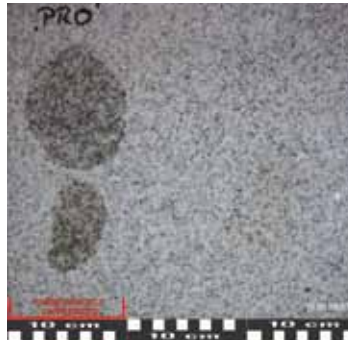
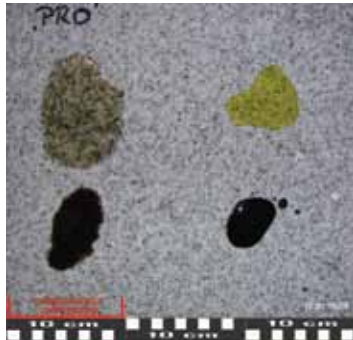
Advantages:

- highly oil repellent
- no reduction in slip resistance
- no change of colour or surface texture
- water based technology. No waxes, silicon or resins

How it works:

StainProtect PROFI bonds tenaciously within the pores beneath a pavement surface, forming a transparent and breathable, highly resilient subsurface system to which oil, grease and dirt, even chewing gum, are unable to adhere strongly. This creates an "Easy to Clean" pavement surface through which moisture vapour can pass normally. Paving retains its original appearance and there is no patchy discoloration after rain. Slip/Skid values are not adversely affected. No waxes, silicon or resins are used. The pavement is simply easier to clean, reducing long term maintenance costs. Regular cleaning using WEISS Grundreiniger completes a sustainable maintenance regime.

Vegetable oil and engine oil allowed to soak into treated (right) and untreated (left) granite



The treated surface (right) is clean after washing with a pH neutral cleaning agent (Grundreiniger) and water

Directions:

Apply when surface is between 5-25°C. Do not dilute. Mix well before use. Apply evenly using a spray, brush, roller or mop to a dry and clean surface. Allow to absorb for 5-10 minutes. A second coat may be applied if desired. Remove excess product with a cloth or squeegee before it dries on to the surface. Treated surfaces may be walked on after 30-60 minutes. Full protection develops within 2-4 days.

Technical Data:

- Form fluid
- Colour slightly yellow
- Odour mild
- pH-value ~5-6
- Density 1.01 g/cm³ at 20°C

Packaging Options:

- 1 litre plastic bottles
- 5 litre plastic bottles
- 10 litre plastic bottles
- 120 litre drums

www.ced.ltd.uk



CED Ltd, 728 London Road, West Thurrock, Grays, Essex, RM20 3LU
 Phone: 01708 867 237, Fax: 01708 867 230, Email: sales@ced.ltd.uk